

# Investor Information

As of March 31, 2004

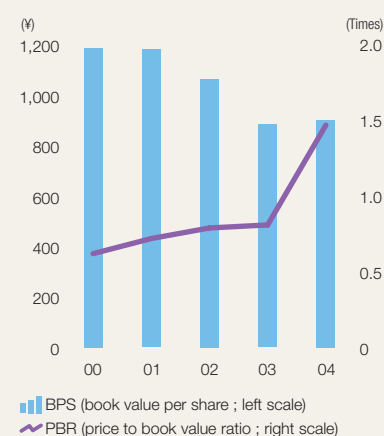
## Common stock

¥110,120 million (US\$1,038,868 thousand)

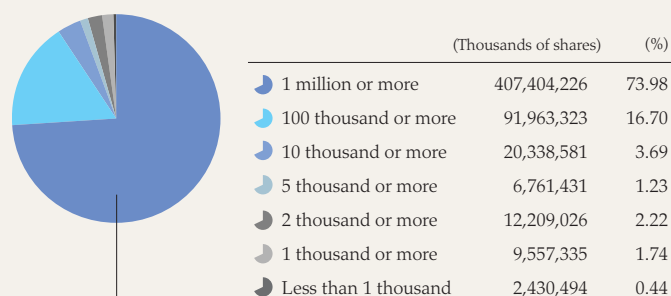
## Shares

Authorized	1,900,000,000
Issued and outstanding	550,664,416
Number of shareholders	29,621

## BPS and PBR



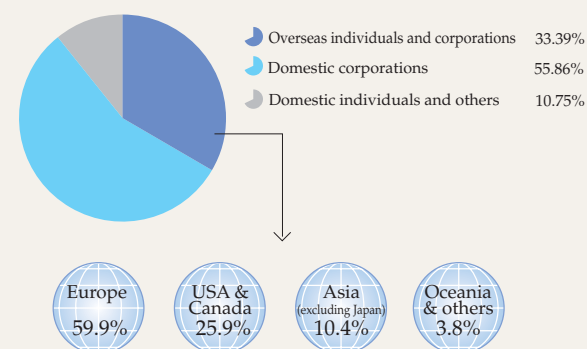
## Shareholding by scale



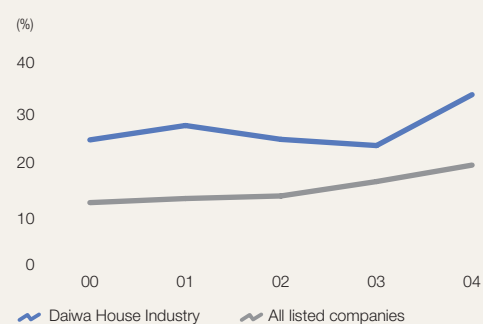
### Principal shareholders

	(Thousands of shares)
Japan Trustee Services Bank, Limited (trust account)	47,368
The Master Trust Bank of Japan, Ltd. (trust account)	34,430
The Chase Manhattan Bank NA, London	17,434
Nippon Life Insurance Company	12,839
The Dai-ichi Mutual Life Insurance Company	11,065
State Street Bank and Trust Company	10,471
UFJ Bank, Limited	10,032
Sumitomo Mitsui Banking Corporation	10,000
The Chuo Mitsui Trust and Banking Company, Limited	9,499
The Daiwa House Employee Shareholders' Association	9,336

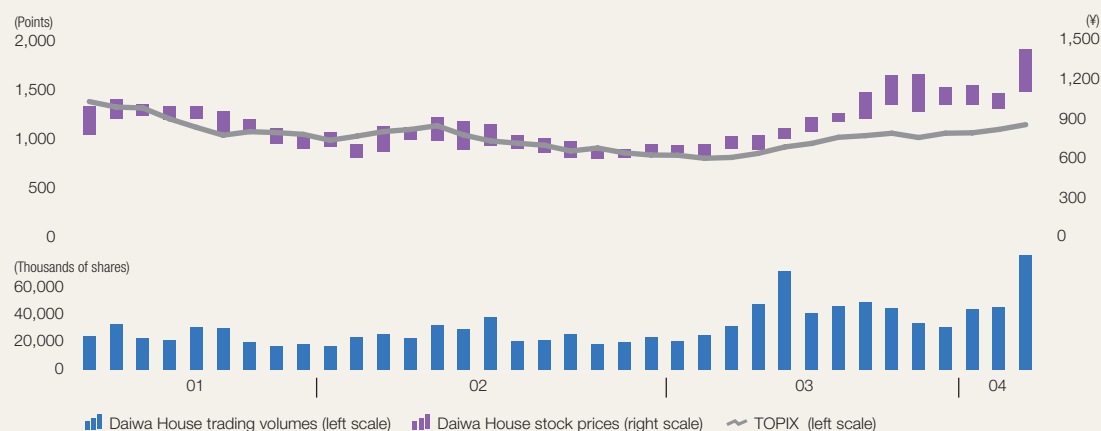
## Foreign shareholding ratio



## Foreign shareholdings over time



## Daiwa House's stock prices and trading volumes on the Tokyo Stock Exchange



## Daiwa House Industry Co., Ltd.

Head office

3-3-5 Umeda, Kita-ku, Osaka 530-8241

Phone: +81-6-6346-2111 Fax: +81-6-6342-1399

## Contact

Should you have any inquiries or need further information, please contact us at the numbers below:

Daiwa House Financial Affairs Department

Phone: +81-6-6342-1400 Fax: +81-6-6342-1419

e-mail: [zaimubu@daiwahouse.jp](mailto:zaimubu@daiwahouse.jp)

## Daiwa House website

Daiwa House offers information on its latest corporate performance, annual report etc. on our website.

Japanese site: <http://www.daiwahouse.co.jp>

English site: <http://www.daiwahouse.co.jp/English/index.html>

## Term-end

March 31 every year

## Ordinary general meeting of shareholders

Held in Osaka at the end of June, which is within 3 months of the date of settlement of accounts for each year

## Transfer agent

The Chuo Mitsui Trust and Banking Co., Ltd.

3-33-1 Shiba, Minato-ku, Tokyo

## Securities traded

Osaka and Tokyo stock exchanges

## Securities code

1925

## Dividends and dividend payout ratio

