


Financial Statements
財務諸表
Consolidated Balance Sheets
連結貸借対照表

(¥ Million / 百万円)

	'05/03	'06/03	'07/03	'08/03	'09/03	'10/03-1H
Assets						
資産の部						
Current assets						
流動資産						
Cash and deposits						
現金預金	150,739	124,021	102,369	100,354	105,840	79,592
Notes receivable, accounts receivable from completed construction contracts and other						
受取手形・売掛金	70,304	60,631	60,238	63,337	51,445	63,160
Marketable securities						
有価証券	24	-	-	20	-	206
Inventories						
たな卸資産	324,238	368,334	432,328	495,612	396,443	325,088
Costs on uncompleted construction contracts						
未成工事支出金	35,248	49,560	59,259	72,602	57,444	31,646
Land for sale						
販売用土地	219,944	247,569	284,610	308,055	237,621	208,161
Buildings for sale						
販売用建物	45,574	48,464	63,375	87,686	76,574	65,839
Other						
その他の流動資産	69,096	69,192	72,672	103,450	108,800	114,678
Allowance for doubtful accounts						
貸倒引当金	-1,861	-2,161	-1,274	-897	-1,342	-1,175
Total current assets	612,542	620,019	666,334	761,877	661,187	581,551
Noncurrent assets						
固定資産						
Property, plant and equipment						
有形固定資産	441,387	505,471	602,260	642,816	728,953	770,379
Buildings and structures						
建物及び構築物	154,714	180,550	204,361	237,455	315,673	331,444
Land						
土地	243,698	286,699	344,107	341,407	356,002	375,439
Other						
その他	42,973	38,220	53,790	63,952	57,277	63,494
Intangible assets						
無形固定資産	8,880	11,791	17,116	12,410	13,176	20,251
Investments and other assets						
投資その他の資産	295,995	337,915	344,311	373,948	407,255	423,104
Total noncurrent assets	746,264	855,178	963,688	1,029,175	1,149,385	1,213,736
Total assets	1,358,806	1,475,197	1,630,022	1,791,052	1,810,573	1,795,287
資産合計						



Financial Statements
財務諸表

Consolidated Balance Sheets

連結貸借対照表

(¥ Million / 百万円)

	'05/03	'06/03	'07/03	'08/03	'09/03	'10/03-1H
Liabilities						
負債の部						
Current liabilities						
流動負債						
Notes payable, accounts payable for construction contracts and other 支払手形・工事未払金等	156,973	169,853	253,255	189,860	129,843	110,905
Short-term loans payable 短期借入金	13,175	6,183	6,933	11,918	16,407	14,369
Current portion of long-term loans payable 一年以内返済予定の長期借入金	1,367	2,927	1,070	1,595	5,610	5,892
Commercial papers コマーシャル・ペーパー	-	-	-	20,000	-	-
Income taxes payable 未払法人税・事業税	15,699	16,211	15,832	23,163	6,962	17,428
Advances received on uncompleted construction contracts 未成工事受入金	48,005	65,423	62,870	58,628	61,054	37,907
Other その他の流動負債	150,035	166,769	149,626	179,158	152,757	146,139
Total current liabilities	385,256	427,368	489,588	484,323	372,636	332,641
Noncurrent liabilities						
固定負債						
Bonds payable 社債	-	-	-	-	-	4,500
Long-term loans payable 長期借入金	6,555	13,527	50,570	193,376	319,956	329,781
Other その他の固定負債	371,087	383,109	428,718	463,911	510,553	506,023
Total noncurrent liabilities	377,642	396,637	479,288	657,287	830,509	840,304
Total liabilities	762,898	824,006	968,876	1,141,611	1,203,145	1,172,946
負債合計						
Interest-bearing liabilities						
有利子負債						
	21,097	22,638	58,573	228,390	344,534	358,200
Debt / Equity ratio (%)						
D/Eレシオ (%)	4.0	3.9	8.9	36.1	56.8	57.6
Net Debt / Equity ratio (%)						
ネットD/Eレシオ (%)	-	-	-	20.2	39.3	44.8



Financial Statements
財務諸表

Consolidated Balance Sheets

連結貸借対照表

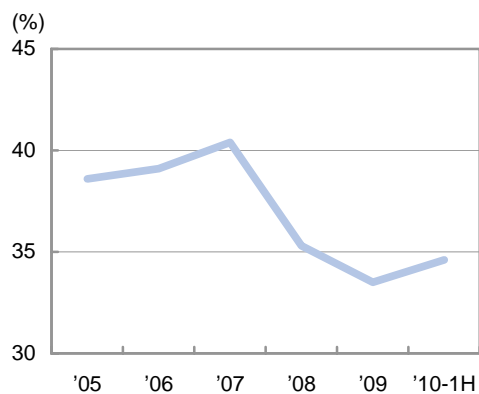
(¥ Million / 百万円)

	'05/03	'06/03	'07/03	'08/03	'09/03	'10/03-1H
Minority interests 少数株主持分	71,798	74,656	-	-	-	-
Shareholders' equity 資本の部						
Capital stock 資本金	110,120	110,120	-	-	-	-
Capital surplus 資本剰余金	147,759	148,019	-	-	-	-
Retained earnings 利益剰余金	325,893	355,494	-	-	-	-
Treasury stock 自己株式	-4,168	-3,571	-	-	-	-
Revaluation reserve for land 土地再評価差額金	-69,229	-63,392	-	-	-	-
Valuation difference on available-for-sale securities その他有価証券評価差額金	14,662	30,746	-	-	-	-
Foreign currency translation adjustment 為替換算調整勘定	-927	-882	-	-	-	-
Total shareholders' equity 資本合計	524,109	576,534	-	-	-	-
Total liabilities, minority interests and shareholders' equity 負債、少数株主持分及び資本合計	1,358,806	1,475,197	-	-	-	-
Net assets 純資産の部						
Shareholders' equity 株主資本						
Capital stock 資本金	-	-	110,120	110,120	110,120	110,120
Capital surplus 資本剰余金	-	-	226,834	226,824	226,824	226,824
Retained earnings 利益剰余金	-	-	387,842	381,479	370,240	377,426
Treasury stock 自己株式	-	-	-7,692	-19,534	-19,553	-19,581
Total shareholders' equity 株主資本合計	-	-	717,104	698,891	687,632	694,790
Valuation and translation adjustments 評価・換算差額等						
Valuation difference on available-for-sale securities その他有価証券評価差額金	-	-	29,873	13,432	2,034	7,864
Revaluation reserve for land 土地再評価差額金	-	-	-86,847	-79,195	-77,878	-77,608
Foreign currency translation adjustment 為替換算調整勘定	-	-	-821	-556	-5,105	-3,667
Total valuation and translation adjustments 評価・換算差額等合計	-	-	-57,795	-66,320	-80,949	-73,411
Minority interests 少数株主持分	-	-	1,837	16,869	744	962
Total net assets 純資産合計	-	-	661,145	649,440	607,427	622,341
Total liabilities and net assets 負債純資産合計	-	-	1,630,022	1,791,052	1,810,573	1,795,287

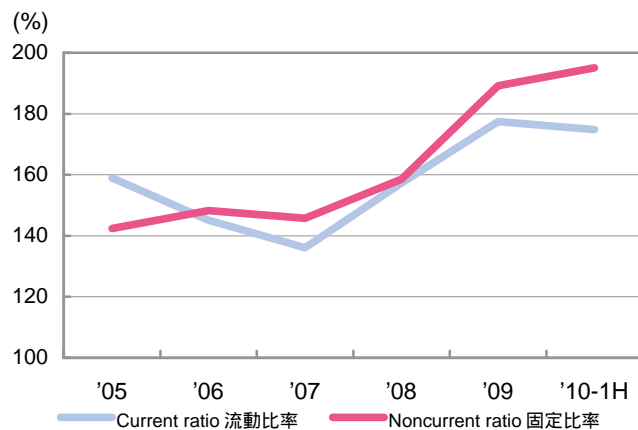


Analysis of Financial Position 財政状態

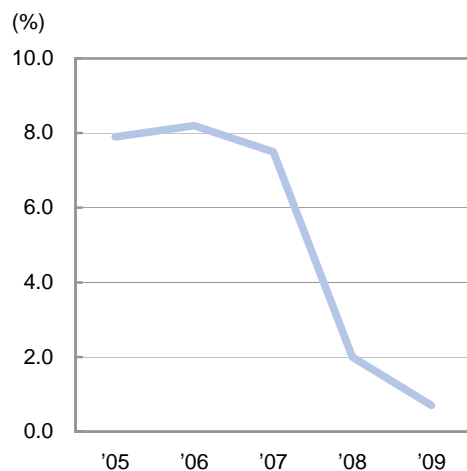
Net Asset Ratio
自己資本比率



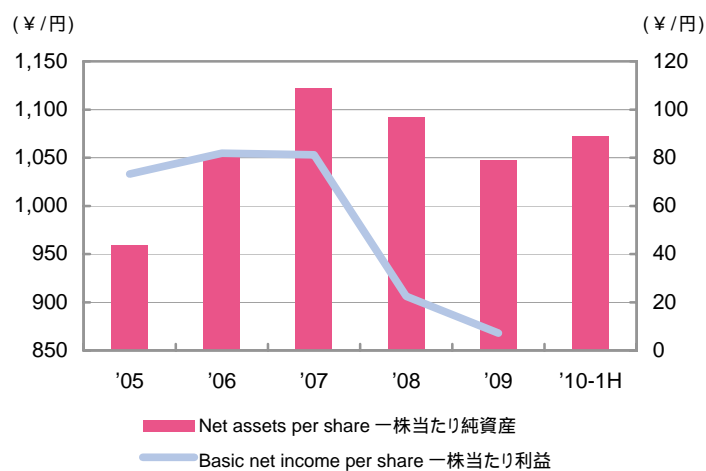
Current Ratio / Noncurrent Ratio
流動比率 / 固定比率



Return on Equity
自己資本当期純利益率



Net Assets per Share (left scale)
一株当たり純資産 (左目盛)
Basic Net Income per Share (right scale)
一株当たり利益 (右目盛)



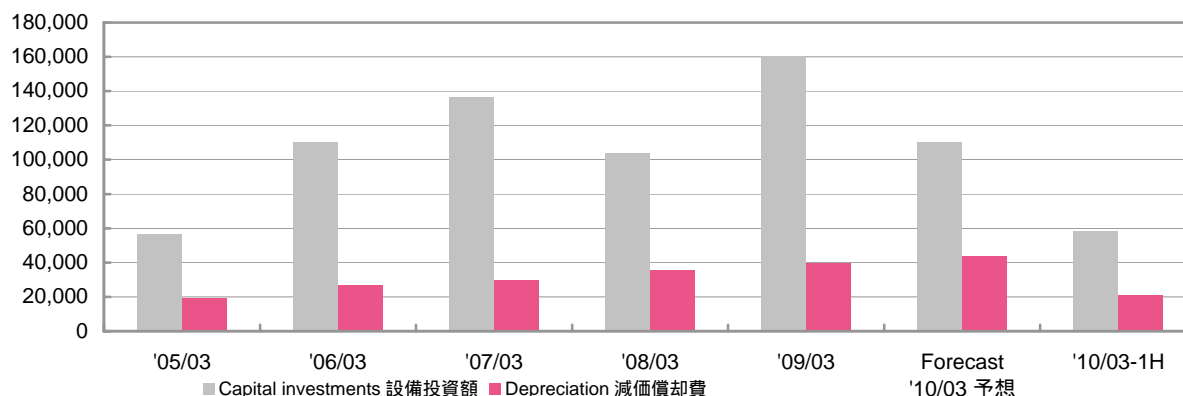
	'05/03	'06/03	'07/03	'08/03	'09/03	'10/03-1H
Net asset ratio 自己資本比率	38.6	39.1	40.4	35.3	33.5	34.6
Current ratio 流動比率	159.0	145.1	136.1	157.3	177.4	174.8
Noncurrent ratio 固定比率	142.4	148.3	145.8	158.5	189.2	195.0
Return on equity 自己資本当期純利益率	7.9	8.2	7.5	2.0	0.7	-
Net assets per share (¥) 一株当たり純資産 (円)	959.08	1,053.37	1,122.88	1,092.04	1,047.50	1,072.94
Basic net income per share (¥) 一株当たり利益 (円)	73.26	81.88	81.15	22.46	7.20	-



Capital Investments 設備投資

Capital Investments / Depreciation 設備投資額 / 減価償却費

(¥ Million / 百万円)



Capital Investments 設備投資額

(¥ Million / 百万円)

	'05/03	'06/03	'07/03	'08/03	'09/03	Forecasts '10/03予想	'09/03-1H	'10/03-1H
Capital investments 設備投資額	56,695	110,143	136,171	103,856	160,600	110,000	90,030	58,464
Residential business 住宅事業	7,699	12,642	12,599	10,484	50,112	40,000	24,413	21,165
Commercial construction business 商業建築事業	31,908	77,100	98,812	71,060	89,259	48,900	55,218	29,172
Resort hotels and sports life business リゾート・スポーツ施設事業	850	3,072	2,677	2,794	2,378	4,600	1,391	1,231
Home center business ホームセンター事業	725	611	3,119	733	1,074	500	204	320
Other businesses その他事業	15,842	17,410	19,907	18,719	19,424	16,900	9,949	6,903
Eliminations/Corporate 消去又は全社	(331)	(694)	(945)	63	(1,648)	(900)	(1,146)	(329)

Depreciation 減価償却費

(¥ Million / 百万円)

	'05/03	'06/03	'07/03	'08/03	'09/03	Forecasts '10/03予想	'09/03-1H	'10/03-1H
Depreciation 減価償却費	19,242	26,814	29,536	35,621	39,318	43,800	18,241	21,085
Residential business 住宅事業	4,486	5,227	5,515	6,956	7,248	10,000	3,440	4,661
Commercial construction business 商業建築事業	4,622	7,897	8,971	10,923	13,979	16,700	5,969	7,926
Resort hotels and sports life business リゾート・スポーツ施設事業	1,869	1,918	1,915	2,579	2,859	2,600	1,373	1,217
Home center business ホームセンター事業	704	665	736	875	980	1,000	436	489
Other businesses その他事業	5,875	9,635	11,096	13,085	13,190	12,700	6,545	6,393
Eliminations/Corporate 消去又は全社	1,684	1,470	1,299	1,200	1,059	800	476	397



Analysis of Operations

業績

Consolidated Statements of Income

連結損益計算書

(¥ Million / 百万円)

	'05/03	'06/03	'07/03	'08/03	'09/03	Forecasts '10/03予想	'09/03-1H	'10/03-1H
Net sales 売上高	1,365,913	1,528,983	1,618,450	1,709,254	1,690,956	1,570,000	821,690	804,460
Cost of sales 売上原価	1,082,132	1,213,644	1,283,587	1,360,348	1,357,820	1,263,500	654,189	645,265
Selling, general and administrative expenses 販売費及び一般管理費	215,932	235,266	249,183	259,784	259,555	244,500	132,393	120,446
Operating income 営業利益	67,849	80,072	85,678	89,120	73,580	62,000	35,107	38,748
Interest income and dividends income 受取利息・配当金	1,067	1,590	2,142	2,602	2,840	-	1,549	1,331
Equity in earnings of affiliates 持分法による投資利益	1,610	350	289	315	542	-	482	741
Total non-operating income 営業外収益計	11,860	29,063	10,609	10,176	12,663	11,100	5,250	6,113
Interest expenses 支払利息	736	1,321	1,750	3,371	5,160	-	2,312	2,972
Total non-operating expenses 営業外費用計	5,500	6,062	6,931	38,006	46,388	16,600	5,094	6,146
Ordinary income 経常利益	74,209	103,073	89,356	61,290	39,855	56,500	35,263	38,715
Extraordinary income 特別利益	2,130	2,422	1,911	1,708	1,046	300	533	235
Extraordinary loss 特別損失	13,231	23,340	14,818	38,135	27,181	12,300	3,316	856
Income before income taxes and minority interests 税金等調整前当期純利益	63,108	82,155	76,449	24,862	13,720	44,500	32,480	38,094
Income taxes 法人税等	20,356	33,645	29,982	12,068	10,029	20,500	14,974	16,732
Minority interests in income(loss) 少数株主利益又は損失	2,489	3,325	73	-285	-479	-	-406	2
Net income 当期純利益	40,262	45,184	46,393	13,079	4,170	24,000	17,912	21,359
Basic net income per share (¥) 一株当たり利益(円)	73.26	81.88	81.15	22.46	7.20	41.44	30.92	36.88
Dividend per share (¥) 一株当たり配当金(円)	17.00	20.00	20.00	24.00	24.00	17.00	-	-
Dividend payout ratio (%) 配当性向(%)	23.2	24.4	24.6	106.8	333.4	41.0	-	-
Balance between financial income and expenses 金融収支	331	269	392	-769	-2,320	-	-763	-1,640
Number of issued and outstanding shares (Thousands of share) 発行済株式数(千株)	546,222	546,915	587,158	579,256	579,171	-	579,209	579,137



Analysis of Operations 業績

Sales by Segment セグメント別売上高

	'05/03	'06/03	'07/03	'08/03	'09/03	Forecasts '10/03予想	'09/03-1H	'10/03-1H
Residential business 住宅事業	854,574	909,587	965,898	1,004,365	959,026	925,000	486,096	471,761
Commercial construction business 商業建築事業	363,830	445,251	477,692	512,734	545,141	459,800	241,632	240,098
Resort hotels and sports life business リゾート・スポーツ施設事業	55,748	66,482	67,762	63,701	60,107	56,500	31,160	28,872
Home center business ホームセンター事業	59,164	63,273	62,241	62,623	63,505	61,000	33,267	31,609
Other businesses その他事業	104,129	121,982	124,646	143,346	143,978	137,000	72,549	66,610
Eliminations/Corporate 消去又は全社	(71,533)	(77,594)	(79,790)	(77,517)	(80,802)	(69,300)	(43,016)	(34,491)
Total 合計	1,365,913	1,528,983	1,618,450	1,709,254	1,690,956	1,570,000	821,690	804,460

Operating Income (Loss) by Segment セグメント別営業利益(損失)

	'05/03	'06/03	'07/03	'08/03	'09/03	Forecasts '10/03予想	'09/03-1H	'10/03-1H
Residential business 住宅事業	50,046	50,965	53,166	53,738	28,533	34,500	21,865	20,302
Commercial construction business 商業建築事業	27,420	39,517	46,933	50,507	66,181	48,000	24,128	28,571
Resort hotels and sports life business リゾート・スポーツ施設事業	1,507	635	1,013	40	-1,115	0	-408	-101
Home center business ホームセンター事業	100	1,106	1,771	1,807	1,153	1,200	665	894
Other businesses その他事業	3,534	4,558	4,373	4,560	2,504	1,000	1,089	31
Eliminations/Corporate 消去又は全社	(14,760)	(16,711)	(21,579)	(21,533)	(23,677)	(22,700)	(12,232)	(10,950)
Total 合計	67,849	80,072	85,678	89,120	73,580	62,000	35,107	38,748



Analysis of Operations 業績

Sales by Segment (Corresponding eight business segments under our medium term management plan)

8 事業領域別売上高 (中期経営計画事業領域)

(¥ 1,000 Million / 億円)

Segmentation employed
in financial statements
決算セグメント

	'09/03	'10/03 Previously announced forecasts 期初予想	'10/03 Revised forecasts 今回予想	'09/03-1H	'10/03-1H
Residential business 住宅事業	3,561	3,180	3,220	1,892	1,726
Commercial construction business 商業建築事業	4,496	4,533	4,470	2,233	2,238
Resort hotels and sports life business リゾート・スポーツ施設事業	1,187	975	1,140	573	543
Home center business ホームセンター事業	348	410	420	169	207
Other businesses その他事業	3,039	2,840	2,820	1,456	1,409
	2,435	1,680	1,793	966	998
	612	625	575	317	293
	2,223	2,250	2,130	1,103	1,040
Eliminations/Corporate 消去又は全社	(992)	(843)	(868)	(493)	(414)
Total 合計	16,909	15,650	15,700	8,216	8,044

Operating Income (Loss) by Segment

8 事業領域別営業利益 (損失)

(¥ 1,000 Million / 億円)

	'09/03	'10/03 Previously announced forecasts 期初予想	'10/03 Revised forecasts 今回予想	'09/03-1H	'10/03-1H
Single-family houses 戸建住宅	30	3	60	47	43
Rental houses 賃貸住宅	341	320	358	166	200
Condominiums マンション	-101	-105	-95	0	-52
Existing home business 住宅ストック	7	3	12	3	5
Commercial facilities 商業施設	339	310	310	145	171
Business and corporate facilities 事業施設	333	90	180	96	118
Health & Leisure 健康余暇	-10	0	0	-4	-1
Others その他	49	46	26	26	13
Eliminations/Corporate 消去又は全社	(252)	(217)	(231)	(128)	(112)
Total 合計	735	450	620	351	387



Reference Materials

参考資料

Residential Business

住宅事業

Management of rental housing units

管理戸数の推移

(Units / 戸数)

		'05/03	'06/03	'07/03	'08/03	'09/03	'09/09
Daiwa Living Co., Ltd. 大和リビング	Management of rental housing units 賃貸住宅管理戸数	106,650	131,583	159,288	187,460	213,423	231,524
	Lump-sum contracts (occupancy guarantee) 一括借上(入居保証)戸数	79,930	101,371	126,647	152,012	176,116	193,009
	Occupancy rates(%) 入居率(%)	96.7	97.1	96.3	96.6	96.1	94.4
Daiwa Lease Co., Ltd. 大和リース	Management of rental housing units 賃貸住宅管理戸数	2,036	2,872	3,851	4,565	5,291	-
	Lump-sum contracts (occupancy guarantee) 一括借上(入居保証)戸数	1,902	2,738	3,717	4,425	5,183	-
	Occupancy rates(%) 入居率(%)	92.9	92.0	93.4	95.3	90.3	-
Nihon Jyutaku Ryutu Co., Ltd. 日本住宅流通	Management of rental housing units 賃貸住宅管理戸数	7,250	8,543	9,757	10,783	12,076	12,561
	Lump-sum contracts (occupancy guarantee) 一括借上(入居保証)戸数	6,363	6,927	8,029	8,991	9,959	10,174
	Occupancy rates(%) 入居率(%)	98.2	95.0	93.8	94.3	94.0	94.5
Total 3社計	Management of rental housing units 賃貸住宅管理戸数	115,936	142,998	172,896	202,808	230,790	244,085
	Lump-sum contracts (occupancy guarantee) 一括借上(入居保証)戸数	88,195	111,036	138,393	165,428	191,258	203,183
	Occupancy rates(%) 入居率(%)	96.7	96.8	96.1	96.5	95.8	94.5

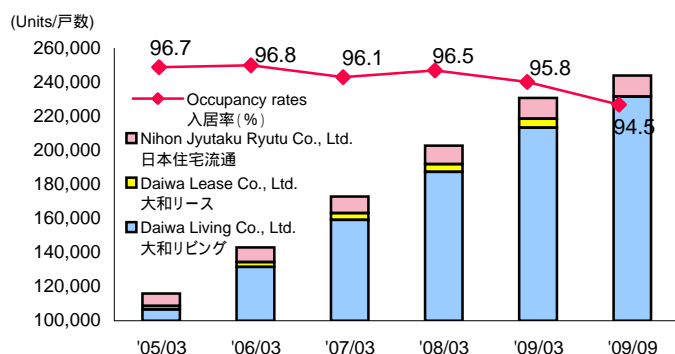
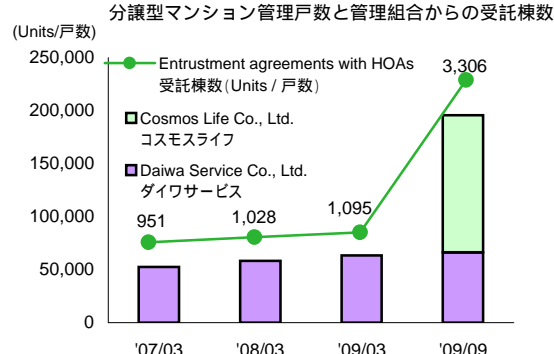
'09/04より大和リースの住宅事業は、大和リビングに移管されています。

Management of condominium units

分譲型マンション管理戸数

(Units / 戸数)

		'05/03	'06/03	'07/03	'08/03	'09/03	'09/09
Daiwa Service Co., Ltd. ダイワサービス	Management of condominium units 管理戸数	42,388	46,355	52,587	58,275	63,271	66,104
	Entrustment agreements with HOAs 管理組合からの受託棟数	788	865	951	1,028	1,095	1,133
Cosmos Life Co., Ltd. コスモスライフ '09/09より子会社化	Management of condominium units 管理戸数	-	-	-	-	-	129,470
	Entrustment agreements with HOAs 管理組合からの受託棟数	-	-	-	-	-	2,173
Total 2社計	Management of condominium units 管理戸数	42,388	46,355	52,587	58,275	63,271	195,574
	Entrustment agreements with HOAs 管理組合からの受託棟数	788	865	951	1,028	1,095	3,306

Management of rental housing units and Occupancy rates (Total)
賃貸住宅管理戸数と入居率 (3社計)Management of condominium units and
Entrustment agreements with HOAs
分譲型マンション管理戸数と管理組合からの受託棟数



Reference Materials

参考資料

Commercial Construction Business

商業建築事業

Sublease areas of commercial construction

転賃建物面積の推移

		'05/03	'06/03	'07/03	'08/03	'09/03	'09/09
Daiwa Lease Co., Ltd. 大和リース	Total leasing floor space(m ²) 貸付可能面積(m ²)	956,829	1,083,127	1,250,863	1,424,599	1,581,745	1,608,049
	Leasing floor space occupied(m ²) 入居賃貸面積(m ²)	943,581	1,068,375	1,225,480	1,389,283	1,538,349	1,560,699
	Tenants テナント数	1,349	1,598	1,882	2,092	2,322	2,405
	Occupancy rates(%)* 入居率(%)*	98.6	98.6	98.0	97.5	97.3	97.1
Daiwa Information Service Co., Ltd. 大和情報サービス	Total leasing floor space(m ²) 貸付可能面積(m ²)	624,207	724,342	891,904	1,004,589	1,129,528	1,203,096
	Leasing floor space occupied(m ²) 入居賃貸面積(m ²)	617,083	720,424	886,370	991,153	1,113,035	1,189,313
	Tenants テナント数	920	1,058	1,405	1,564	1,773	1,919
	Occupancy rates(%)* 入居率(%)*	98.9	99.5	99.4	98.7	98.5	98.9
Daiwa Royal Co., Ltd. ダイワロイヤル	Total leasing floor space(m ²) 貸付可能面積(m ²)	707,371	792,299	871,292	920,013	958,845	997,254
	Leasing floor space occupied(m ²) 入居賃貸面積(m ²)	704,845	790,273	867,054	914,545	944,568	982,694
	Tenants テナント数	1,221	1,351	1,488	1,583	1,665	1,736
	Occupancy rates(%)* 入居率(%)*	99.6	99.7	99.5	99.4	98.5	98.5
Total 3社計	Total leasing floor space(m ²) 貸付可能面積(m ²)	2,288,407	2,599,768	3,014,059	3,349,201	3,670,118	3,808,399
	Leasing floor space occupied(m ²) 入居賃貸面積(m ²)	2,265,509	2,579,072	2,978,904	3,294,981	3,595,952	3,732,706
	Tenants テナント数	3,490	4,007	4,775	5,239	5,760	6,060
	Occupancy rates(%)* 入居率(%)*	99.0	99.2	98.8	98.4	98.0	98.0

【 Reference / 参考 】

Management of Owned Commercial Facilities

自社保有商業施設の運営状況

		'05/03	'06/03	'07/03	'08/03	'09/03	'09/09
Daiwa House Industry Co., Ltd. 大和ハウス工業	Total leasing floor space(m ²) 貸付可能面積(m ²)	-	-	-	-	-	294,107
	Leasing floor space occupied(m ²) 入居賃貸面積(m ²)	-	-	-	-	-	279,769
	Tenants テナント数	-	-	-	-	-	618
	Occupancy rates(%)* 入居率(%)*	-	-	-	-	-	95.1

*Leasing floor space occupied/Total leasing floor space
*入居面積/賃貸可能面積


Reference Materials
参考資料

Resort Hotels and Sports Life Business

リゾート・スポーツ施設事業

DAIWA ROYAL HOTELS

ダイワロイヤルホテルズ

			'06/03	'07/03	'08/03	'09/03	'09/09
Number of guests 宿泊お客様数(人)	1H	上期	1,669,329	1,761,123	1,636,366	1,596,953	1,490,678
	2H	下期	1,439,925	1,525,192	1,463,770	1,343,032	
Room occupancy rates(%) 客室稼働率(%)	1H	上期	55.3	58.9	55.8	53.7	49.0
	2H	下期	57.8	53.2	53.4	46.9	
Number of Daiwa Royal club members メンバーズ期末会員数(人)			9,921	9,288	8,968	8,634	8,466

(Note) 30 hotels. / (注) ホテル数は30ヶ所

Golf courses
ゴルフ場

			'06/03	'07/03	'08/03	'09/03	'09/09
Number of guests ゴルフ場ご利用お客様数(人)	1H	上期	191,718	186,052	194,684	196,277	200,608
	2H	下期	145,741	161,573	159,077	162,595	
Number of members 期末会員数(人)	1H	上期	5,461	5,237	5,054	4,643	4,069
	2H	下期	5,339	5,161	4,928	4,492	

(Note) 10 golf courses. / (注) ゴルフ場は10ヶ所

Sports club NAS
スポーツクラブNAS

			'06/03	'07/03	'08/03	'09/03	'09/09
Number of members 期末会員数(人)			96,835	97,270	93,034	96,687	95,368

(Note) 51 sports clubs. / (注) スポーツクラブは51ヶ所

Other Businesses City-Center Hotels

その他事業 都市型ホテル部門

(Rooms / 客室数)

			'06/03	'07/03	'08/03	'09/03	'09/09
Room occupancy rates(%) 客室稼働率(%)	1H	上期	78.1	75.6	78.3	74.8	71.7
	2H	下期	76.5	75.5	74.2	69.4	
Daiwa Roynet Hotels ダイワロイネットホテル(ダイワロイヤル)			(3)	(8)	(10)	(14)	(17)
Royton Sapporo ロイトン札幌(大和ハウス工業)			599	1,675	2,085	2,916	3,635
OSAKA DAI-ICHI HOTEL 大阪第一ホテル(大阪マルビル)			(1)	(1)	(1)	(1)	(1)
Total 合計			292	292	292	292	292
			(1)	(1)	(1)	(1)	(1)
			448	448	447	447	447
			(5)	(10)	(12)	(16)	(19)
			1,339	2,415	2,824	3,655	4,374

(Note) Figures in parentheses indicate the number of hotels in each category.
(注) ()内はホテル数

Home Center Business

ホームセンター事業

			'06/03	'07/03	'08/03	'09/03	'09/09
Number of customers (Thousands) 購入お客様数(千人)	1H	上期	13,103	12,481	12,179	13,040	12,825
	2H	下期	12,101	11,732	11,576	11,626	
Sales account per customer (¥) お客様1人当たり購入単価(円)	1H	上期	2,230	2,282	2,337	2,303	2,255
	2H	下期	2,372	2,387	2,451	2,365	
Sales floor space (except out-mall selling space) (㎡) 期末店舗面積(外売場を除く)(㎡)			196,192	207,476	233,936	234,749	232,485
Number of stores (Stores) 期末店舗数(店)			40	42	47	48	48

(Note) Excluding home renovation. / (注) リフォームを除く


Reference Materials
参考資料
Performance Indicators of Major Companies in the Daiwa House Group
大和ハウスグループ主要各社の経営指標

(¥ Million / 百万円)

		Net Sales	Operating income	Ordinary income	Net income	Total assets	Net assets	Interest-bearing liabilities
		売上高	営業利益	経常利益	四半期純利益	総資産	純資産	有利子負債
Daiwa House Industry Co., Ltd. (non-consolidated)	2008/09	560,639	24,472	28,397	15,978	1,393,164	561,225	250,961
大和ハウス工業 (個別)	2009/09	532,431	29,105	31,307	19,216	1,308,716	552,918	248,725
Daiwa Lease Co., Ltd.	2008/09	63,908	2,559	2,206	1,019	284,863	103,873	16,500
大和リース	2009/09	63,661	3,619	3,151	1,624	300,373	102,903	37,005
Daiwa Rakuda Industry Co., Ltd.	2008/09	20,498	503	565	308	38,511	24,408	14
ダイワラクダ工業	2009/09	18,981	286	338	156	34,623	20,378	-
Daiwa Logistics Co., Ltd.	2008/09	17,357	735	776	453	26,724	15,463	5,575
大和物流	2009/09	15,507	740	786	440	27,630	15,889	6,002
Daiwa Service Co., Ltd.	2008/09	12,241	466	531	312	10,977	5,327	-
ダイワサービス	2009/09	11,394	439	553	459	10,953	5,834	-
Daiwa Living Co., Ltd.	2008/09	73,568	2,895	3,206	1,843	54,209	16,178	-
大和リビング	2009/09	85,666	1,923	2,103	1,135	57,404	17,776	-
Daiwa Information Service Co., Ltd.	2008/09	15,525	1,167	1,189	589	65,708	6,714	3,924
大和情報サービス	2009/09	17,445	1,447	1,444	847	70,716	7,440	3,334
Daiwa Royal Co., Ltd.	2008/09	15,954	1,522	1,758	1,010	66,565	7,248	6,264
ダイワロイヤル	2009/09	17,248	1,235	1,595	855	75,168	8,444	10,908
Nihon Jyutaku Ryutu Co., Ltd.	2008/09	8,933	49	61	1	12,811	3,319	2,500
日本住宅流通	2009/09	10,407	201	179	100	14,422	3,424	3,470
Royal Home Center Co., Ltd.	2008/09	33,267	843	1,047	313	43,393	33,836	2,519
ロイヤルホームセンター	2009/09	31,574	865	922	439	45,541	34,263	3,585
Daiwa Resort Co., Ltd.	2008/09	25,810	85	148	-108	72,944	18,866	14
大和リゾート	2009/09	22,968	123	188	3	65,835	13,926	50
Daiwa House Industry Co., Ltd. (consolidated)	2008/09	821,690	35,107	35,263	17,912	1,859,944	637,791	332,384
大和ハウス工業 (連結)	2009/09	804,460	38,748	38,715	21,359	1,795,287	622,341	358,200
Parent company's share of the Group total (Times)	2008/09	1.47	1.43	1.24	1.12	-	-	-
連単倍率 (倍)	2009/09	1.51	1.33	1.24	1.11	-	-	-